



*HT 1000,  
JT 1000, MTX 8000  
& MTX 9000*

*COMPATIBLE WITH MT2000 AND MTS2000*

*HT 1000—Practical  
JT 1000—On the move  
MTX 8000/MTX 9000—  
Trunked and Talkaround*



# HT 1000, JT 1000, MTX 8000 & MTX 9000

Compatible with MT2000 AND MTS2000

## Audio Accessories

### REMOTE SPEAKER MICROPHONES (RSM)

- NMN6193C\* Remote Speaker Microphone
- NMN6191C\* Noise Cancelling Remote Speaker Microphone
- 0104010J46 Replacement Coil Cord Assembly for Remote Speaker Microphones

The Remote Speaker Microphone is a water-resistant compact unit that allows the user to talk and listen without removing the radio from the belt, case or charger. It has a coiled cord, push-to-talk switch and clothing clip on the back cover.



NMN6193C

### RSM ACCESSORIES

#### EPAULET STRAP

- RLN4294A Epaulet Strap, Velcro
- RLN4295A Epaulet Strap, small clip

Black leather epaulet strap secures remote speaker microphone to epaulet straps on shirt or jacket and accommodates back clip in leather cut-outs. Snap closure secures remote speaker microphone cord to allow reliable communications in hostile environments.



RLN4295A



NMN6228C

### PUBLIC SAFETY SPEAKER MICROPHONES (PSM)

- NMN6228C\* Noise-Cancelling Public Safety Speaker/Microphone, 30" straight cord
- NMN6243B\* Noise-Cancelling Public Safety Speaker/Microphone, 18" straight cord
- NMN6244B\* Noise-Cancelling Public Safety Speaker/Microphone, 24" straight cord

Public Safety Speaker Microphones include straight cord assembly, 3.5mm earjack, swivel clip, quick disconnect latch, antenna connector, and receiver, audio high/low volume push button. Antenna must be ordered separately.

### MICJACKETS

- RLN5002A MicJacket Kit, compatible with NMN6191C and NMN6193C remote speaker microphones
- RLN5004A MicJacket Kit, compatible with NMN6228C, NMN6243B and NMN6244B public safety speaker microphones

The MicJackets provide speaker microphone users with a way to further protect the "head" of their microphone from dust, dirt, metal particles, sweat, body oils and other on-the-job grime. MicJackets also allow the user to handle or interact with the speaker microphone in a more hygienic way.

\* Intrinsicly safe

ORDER TODAY! 1-800-422-4210  
U.S. Federal Government Customers Call 1-800-826-1913



# HT 1000, JT 1000, MTX 8000 & MTX 9000

Compatible with MT2000 AND MTS2000

## Audio Accessories



BDN6719A

### RECEIVE ONLY EARPIECES

*BDN6781A* Pellet Style Earpiece

*BDN6719A* Flexible Ear Receiver; this flexible ear receiver contains a flexible earloop and speaker and rests external to the ear

*7580372E11* Replacement Foam Ear Cushions for BDN6719A

Plugged into the 3.5mm earjack on the RSM audio adapter, these audio accessories will mute the speaker on the RSM allowing the user to discreetly hear all incoming messages. Ideal for noisy environments. The following audio accessories can also be plugged directly into the radio with the BDN6676D audio adapter.

### RECEIVE ONLY HEADSETS

*RMN4056B* Receive-Only Dual-Muff Headband Style Headset; provides 24dB of noise reduction; for use with NMN6193C and NMN6191C (can be plugged directly into radio with BDN6676D adapter)

*RMN4057B* Receive-Only Hardhat Mount Headset mounts easily to hardhats with slots and provides 22dB of noise reduction; for use with NMN6193C and NMN6191C (can be plugged directly into radio with BDN6676D adapter)



RMN4056B

# HT 1000, JT 1000, MTX 8000 & MTX 9000

Compatible with MT2000 AND MTS2000

## Audio Accessories

### SURVEILLANCE KITS

#### RECEIVE ONLY EARPIECE WITH STANDARD EARPHONE EARLOOP (1-WIRE)

BDN6664A\* Beige  
BDN6665A†\* Beige  
BDN6726A Black  
BDN6727A† Black

#### RECEIVE ONLY EARPIECE WITH VOLUME CONTROL (1-WIRE)

BDN6666A\* Beige  
BDN6728A Black

#### EARPIECE WITH MICROPHONE AND PUSH-TO-TALK COMBINED (2-WIRE)

BDN6667A\* Beige  
BDN6669A†\* Beige  
BDN6729A Black  
BDN6731A† Black

#### EARPIECE WITH MICROPHONE AND PUSH-TO-TALK SEPARATE (3-WIRE)

BDN6668A\* Beige  
BDN6670A†\* Beige  
BDN6730A Black  
BDN6732A† Black

Surveillance accessories allow the user to privately receive communications with the earpiece and are ideal when environments require discreet communications. The following surveillance accessories require the PMLN4455A (3.5mm threaded adapter jack) that attaches to the radio, unless being used with speaker microphone.

### SURVEILLANCE KIT ACCESSORIES

BDN6676D\* 3.5mm Jack Adapter with Quick Disconnect Latch  
5080371E73 Standard Rubber Eartips, pack of 25, Beige  
5080371E75 Standard Rubber Eartips, pack of 25, Black



BDN6664A



BDN6667A



BDN6668A



BDN6676D

†Extra loud earphone (exceeds OSHA limits)

\*Intrinsically Safe

ORDER TODAY! 1-800-422-4210  
U.S. Federal Government Customers Call 1-800-826-1913



# HT 1000, JT 1000, MTX 8000 & MTX 9000

Compatible with MT2000 AND MTS2000

## Audio Accessories

### SURVEILLANCE KITS WITH EXTENDED WEAR COMFORT EARPIECE

#### RECEIVE ONLY COMFORT EARPIECE

RLN5314A Beige

RLN5313A Black

#### RECEIVE ONLY COMFORT EARPIECE WITH MICROPHONE AND PUSH-TO-TALK COMBINED (2-WIRE)

RLN5311A Beige

RLN5312A Black



RLN5311A



RLN5312A

These kits include a comfort earpiece with a rubber eartip and a clear comfortable acoustic tube. Users hear transmissions clearly, while the clear tube provides a discreet appearance. The above surveillance accessories require the BDN6676D (3.5mm threaded adapter jack) that attaches to the radio, unless being used with speaker microphone.



NTN8370A

### NOISE KITS

**NTN8370A** Extreme Noise Kit, includes 2 Foam Earplugs for loud environments; provides 24dB of noise reduction

**NTN8371A** Low Noise Kit, includes Rubber Eartip for low noise environments; does not provide hearing protection

**5080384F72** Replacement Foam Plugs; for use with NTN8370A (pack of 50)

**5080371E73** Replacement Standard Beige Rubber Eartips; for use with NTN8371A (pack of 25)

**5080371E75** Replacement Standard Black Rubber Eartips; for use with NTN8371A (pack of 25)



NTN8371A

This lightweight translucent tube attaches to Motorola Surveillance Kits to provide additional flexibility and comfort. Clothing clip prevents the accessory from being pulled from the ear due to body movement or head rotation.

# HT 1000, JT 1000, MTX 8000 & MTX 9000

Compatible with MT2000 AND MTS2000

## Audio Accessories

### CLEAR COMFORTABLE EARPIECES

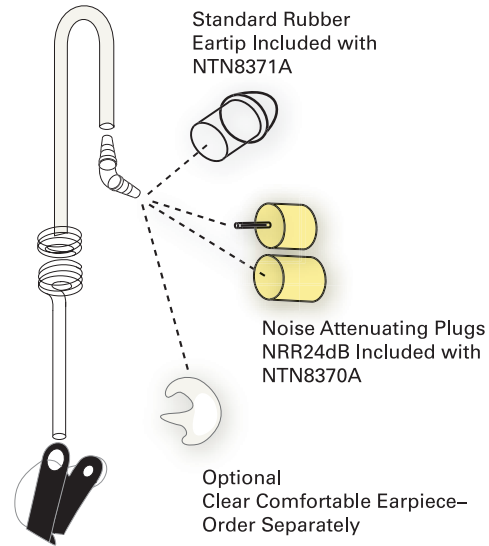
RLN4760A	Small Custom Earpiece, Right Ear
RLN4763A	Small Custom Earpiece, Left Ear
RLN4761A	Medium Custom Earpiece, Right Ear
RLN4764A	Medium Custom Earpiece, Left Ear
RLN4762A	Large Custom Earpiece, Right Ear
RLN4765A	Large Custom Earpiece, Left Ear

The Clear Comfortable Earpiece forms to the inside of the ear and is perfect for low noise environments. Compatible with the NTN8371A, clear acoustic tube assembly, and surveillance kits (1, 2, 3 wire). The earpiece is made of easy-to-clean chemically inert, hypo-allergenic material. The following 3 items are required for this product:

- Clear Comfortable Earpiece
- Clear Acoustic Tube Assembly (NTN8371A)
- Surveillance Kit



RLN4763A



Standard Rubber Eartip Included with NTN8371A

Noise Attenuating Plugs NRR24dB Included with NTN8370A

Optional Clear Comfortable Earpiece—Order Separately

Acoustic Tube with Earphone



### COMPLETELY DISCREET EARPIECE

RLN4922A	Completely Discreet Earpiece Kit; includes Wireless Earpiece, Inductive Neckloop, 6 Spare Batteries and 5 Spare Ear Wax Guards
RLN4919A	Ear Wax Guards, 5 per pack
RNN4005A	1.4V Battery, 6 per pack

Remain discreetly in touch with this miniaturized receiver. All messages received through the user's two-way radio are inductively relayed to the Wireless Earpiece in the user's ear. Inductive Neckloop is easily hidden under the user's clothing for covert operations. Neckloop attaches to the user's Motorola Surveillance Kit, providing completely discreet two-way communications. Security operatives, public safety officials, and private investigators can communicate with ease without any visible equipment. Small as it is, it offers a full range of audio functions including automatic squelch, automatic gain control and noise filtering. Must be used in conjunction with a Motorola Surveillance Kit. Just remove the earpiece on any standard 2- or 3-wire Surveillance Kit and plug in the Neckloop for completely discreet communication.



RLN4922A

ORDER TODAY! 1-800-422-4210  
U.S. Federal Government Customers Call 1-800-826-1913



# HT 1000, JT 1000, MTX 8000 & MTX 9000

Compatible with MT2000 AND MTS2000

## Audio Accessories



BDN6780A

### PELLET STYLE EARPIECES

- BDN6780A** Single Earbud with Microphone and Push-To-Talk, requires adapter BDN6676D
- BDN6781A** Receive only Earbud, requires adapter BDN6676D
- 7580372E70** Replacement Foam Ear Cushions for Pellet Earpieces
- BDN6676D** 3.5mm Jack Adapter with Quick Disconnect Latch

The pellet style earpiece allows the user to receive communication discreetly and is comfortable for extended wear.

### EAR MICROPHONE SYSTEM (EMS)

- BDN6677A\*** Ear Microphone for Standard Noise Levels (up to 95dB, Black)
- BDN6678A\*** Ear Microphone for Standard Noise Levels (up to 95dB, Beige)
- BDN6641A\*** Ear Microphone for High Noise Levels (up to 105dB)

### INTERFACE MODULES FOR EMS

- BDN6708B\*** Push-To-Talk Interface Module
- BDN6671B\*** Push-To-Talk or Voice-Activated Interface Module

This compact unit picks up the voice through bone vibrations in the ear canal. The miniature earpiece leaves the hands free and face unobscured when worn by rescue and hazard protection personnel, who still retain the ability for direct hearing and speaking. For personnel required to wear breathing apparatus, communications with protective masks are as clear as communications without. And its high speech clarity under noisy environments makes it ideal for high noise environments. Available in PTT or Voice Activated (VOX). Interface Module required.



BDN6641A shown with  
BDN6671B interface module

*\*Intrinsically safe*

# HT 1000, JT 1000, MTX 8000 & MTX 9000

Compatible with MT2000 AND MTS2000

## Audio Accessories

### OPTIONAL ACCESSORIES FOR EAR MICROPHONE SYSTEM

- 0180358B38\* Push-To-Talk Ring Switch
- 0180300E83\* Push-To-Talk Body Switch
- 0180300E25 Earguard with Adjustable Loop; secures ear mic in ear
- 0180358B32 Earholder, Black, size Small; secures ear mic in ear
- 0180358B33 Earholder, Black, size Medium; secures ear mic in ear
- 0180358B34 Earholder, Black, size Large; secures ear mic in ear
- 0180358B35 Earholder, Clear, size Small; secures ear mic in ear
- 0180358B36 Earholder, Clear, size Medium; secures ear mic in ear
- 0180358B37 Earholder, Clear, size Large; secures ear mic in ear
- 4202006A01 Replacement Back Cover Clip
- 4280369E44 Replaceable Belt Clip with Screws
- 4285838B01 Replacement Collar Clip
- 5080358B28 Eartips, Black, size Medium (pack of 10)
- 5080358B29 Eartips, Black, size Large (pack of 10)
- 5080358B30 Eartips, Beige, size Medium (pack of 10)
- 5080358B31 Eartips, Beige, size Large (pack of 10)



0180300E25



0180300E83



0180358B38

# HT 1000, JT 1000, MTX 8000 & MTX 9000

Compatible with MT2000 AND MTS2000

## Audio Accessories

### CommPort: INTEGRATED MICROPHONE/RECEIVER SYSTEM

- NTN1625A\*** Integrated Ear Microphone/ Receiver System with PTT on Radio Adapter (includes BDN6676D radio adapter)
- NTN1624A\*** Integrated Ear Microphone/ Receiver System with Palm PTT (includes BDN6676D radio adapter)
- NTN1663A\*** Integrated Ear Microphone/ Receiver System with ring PTT (includes BDN6676D radio adapter)
- NTN1736A\*** Integrated Ear Microphone/ Receiver System with Snap-on-Side PTT (includes BDN6676D radio adapter)
- NNTN4186A\*** Integrated Ear Microphone/ Receiver System w/Body Push-To-Talk (includes BDN6676D radio adapter)

### CommPort: REPLACEMENT PARTS

- NKN6508A** Replacement Cable for NTN1625A
- NKN6510A** Replacement Palm PTT Cable for NTN1624A
- NKN6512A** Replacement Ring PTT Cable for NTN1663A
- NKN6525A** Replacement Snap-on PTT Cable for NTN1736A
- NNTN4188A** Replacement Body Push to Talk Case for NNTN4186
- NTN8821A** CommPort Maintenance Kit; includes replacement ear tubes (pack of 10), windscreens (pack of 2) and microphone seal strips (pack of 10)
- NTN8986A** Adhesive Pads (pack of 90) for secure attachment to ear
- NTN8988A** Ear Straps (pack of 10), for secure attachment to ear
- RLN5037A** Replacement Ear Tubes (pack of 10)
- 4285838B01** Replacement Collar Clip
- 4202006A01** Replacement Back Cover Clip
- BDN6676D** 3.5mm Jack Adapter with Quick Disconnect Latch

With the CommPort Integrated/Microphone System, users can speak in a whisper and hear in a crowd. CommPort contains a miniature microphone and receiver that connects to a Motorola Two-way radio and fastens securely to the ear. Using the latest in voice processing technology, the CommPort system makes it possible to hear and speak under the most adverse conditions, by picking up sound waves as they cross the face, enhancing voice clarity under high noise conditions. The miniature mic that sits on the top of the earpiece picks them up, cutting through noise, delivering audio without blocking normal hearing. Its variety of push-to-talk options make it ideal for different applications, which include transmitting to firefighters in a burning building, S.W.A.T. or police in covert situations, or workers operating in a noisy environment.

*\*Intrinsically safe*



# HT 1000, JT 1000, MTX 8000 & MTX 9000

Compatible with MT2000 AND MTS2000

## Audio Accessories



NMN6245A

### LIGHTWEIGHT HEADSETS

- NMN6245A\* Single-Muff Lightweight Adjustable Headset with Boom Microphone In-line Push-To-Talk Switch (requires BDN6676D adapter)
- NMN6246B\* Ultra-light Headset with Boom Microphone and In-line Push-To-Talk Switch; ear bud style receiver (requires BDN6676D adapter)
- NMN1020A\* Lightweight Headset with Boom Microphone to be worn on a helmet or safety glasses; includes NKN6498A adapter cable; requires BDN6676D adapter
- NKN6498A\* Headset Adapter Cable for use with NMN1020A
- 5080574E02 Foam Earpads for use with NMN6245A (pack of 10)
- BDN6676D 3.5mm Jack Adapter with Quick Disconnect Latch

Lightweight headsets allow for high clarity, hands-free, discreet two-way communication, while adding comfort necessary for extended wear in moderate noise environments. Requires BDN6676D Audio Adapter.

### TEMPLE TRANSDUCER

- RMN4049A\* Temple Transducer
- 0180305J46 Temple Transducer and Ear Microphone System Training CD

The temple transducer represents a significant achievement in headset design and functionality. It allows the user to receive audio without covering the ear. The receiver portion of the accessory rests on the temples and is capable of converting the receive audio from a two-way radio into sound vibration. The sound vibration is transmitted through the surrounding human tissue and bone directly into the inner ear where it is received by the user. It features an in-line PTT and noise canceling boom microphone. The temple transducer enhances communications and safety by not impairing the user's hearing of external sound environment, such as from machinery and equipment, warning and fire alarms, the intercom, traffic, and even casual conversations with their co-workers.

*\*Intrinsically safe*

# HT 1000, JT 1000, MTX 8000 & MTX 9000

Compatible with MT2000 AND MTS2000

## Audio Accessories

### MEDIUM WEIGHT HEADSETS

**NMN6258A\*** Medium Weight Headset, over the head with In-Line PTT, noise reduction rating = 24dB

**NMN6259A\*** Medium Weight Headset, behind the head with In-Line PTT, noise reduction rating = 24dB

**RMN4051B** Hardhat Mount Headset mounts easily to hardhats with slots and provides 22dB of noise reduction; requires RKN4095A adapter cable, hardhat not included

Medium Weight Headsets feature noise canceling Boom Microphones and offer high-clarity sound with the additional hearing protection necessary for providing consistent, clear two-way radio communications in harsh, noisy situations.

*\*Intrinsically safe*



NMN6258A



RMN4052A

### TACTICAL MEDIUM WEIGHT HEADSETS

**RMN4052A** Tactical Headband Style Headset, Grey; provides 24dB of noise reduction and requires RKN4095A adapter cable

**RMN4053A** Tactical Hardhat Mount Headset mounts easily to hardhats with slots; provides 22dB of noise reduction and requires RKN4095A adapter cable, hardhat not included

**RKN4095A** Radio Adapter Cable with In-Line PTT for use with RMN4051B, RMN4052A and RMN4053A

Same high-clarity sound and additional hearing protection as our standard medium weight headsets while including two microphones on the outside of each earcup which reproduces the ambient sound back into the headset. Harmful sounds are suppressed to a safe level and low sounds are amplified up to 5 times but never more than 82dB. Includes on/off volume control on ear cups.



# HT 1000, JT 1000, MTX 8000 & MTX 9000

Compatible with MT2000 AND MTS2000

## Audio Accessories



RMN5015A

### RACING HEADSET

**RMN5015A** Racing Headset For Two-way Radios  
(adapter cable BDN6673B required)

**BDN6673B** Adapter Cable

Motorola is the Official Wireless Equipment supplier of CART® (Championship Auto Racing Teams), so whether your customers' playing field is a racetrack, construction site or other challenging environment, they can count on this Racing Headset for superior comfort and dependable operation.

### HEAVY DUTY HEADSETS

**BDN6645A\*** Push-To-Talk Headset with Boom Microphone; requires adapter cable BDN6673B; noise reduction rating=24dB

**BDN6635B\*** Voice-activated Headset with Boom Microphone; requires adapter cable BDN6673B; noise reduction rating=24dB

**BDN6636B\*** Voice-activated Headset with Throat Microphone; requires adapter cable BDN6673B; noise reduction rating=24dB

**BDN6673B\*** Radio Adapter Cable

Heavy duty headsets include noise-cancelling boom microphones and can be worn with or without a hardhat. The Push-To-Talk switch is located on the earcup. The VOX module is contained within the headset on voice activated units. Heavy duty headsets require radio adapter cable BDN6673B, to be ordered separately.

*\*Intrinsically safe*



BDN6636B



BDN6645A



BDN6635B

ORDER TODAY! 1-800-422-4210  
U.S. Federal Government Customers Call 1-800-826-1913



# HT 1000, JT 1000, MTX 8000 & MTX 9000

Compatible with MT2000 AND MTS2000

## Carrying Accessories

### CARRYING CASES

#### STANDARD BELT LOOP CARRYING CASES

- NTN7238A Leather Carry Case with Belt Loop, "D" rings and T-Strap for use with high capacity battery
- NTN7239A Leather Carry Case with Belt Loop, "D" rings and T-Strap for use with ultra-high capacity battery
- NDN4018B DTMF Leather Carry Case with Belt Loop and antenna strap for use with high and ultra-high capacity batteries
- NTN7247A Nylon Carry Case with Belt Loop and Strap for use with high and ultra-high capacity batteries

#### HIGH ACTIVITY SWIVEL CARRYING CASES

- NTN8035B Leather Carry Case with 2.5" High Activity Swivel Belt Loop, "D" rings and T-Strap for use with high capacity battery
- NTN8037B Leather Carry Case with 3.0" High Activity Swivel Belt Loop, "D" rings and T-Strap for use with high capacity battery
- NTN8036B Leather Carry Case with 2.5" High Activity Swivel Belt Loop, "D" rings and T-Strap for use with ultra-high capacity battery
- NTN8038B Leather Carry Case with 3.0" High Activity Swivel Belt Loop, "D" rings and T-Strap for use with ultra-high capacity battery
- NDN4017B Leather DTMF Carry Case with 3.0" High Activity Swivel Belt Loop and Antenna Strap for use with high and ultra-high capacity battery

Motorola designed and engineered carrying cases are available in a variety of sizes to fit your radio and battery while permitting audio to be clearly heard. Constructed of top grain 8 oz. natural leather and all stainless steel hardware, Motorola carrying cases were developed to meet the demands of public safety, construction and other users who operate in the most rigorous environments.

Swivel carrying cases have a high activity swivel "D" button and belt loop. To remove case from belt loop, rotate case 180 degrees and slide case upward, out of the holder. Case stays on belt more securely in high activity applications versus standard swivel cases while allowing the radio-to-swing freely with body movements.



NTN7247A



NTN8038B



NTN8036B



RLN4943A

#### UNIVERSAL HOLDER WITH GOOSENECK BRACKET

- RLN4943A Universal Holder with Gooseneck Bracket; provides flexible mounting solutions for portable radios
- RLN4945A Universal Holder with Gooseneck Bracket and wheelchair quick-release assembly
- RLN4944A Wheelchair quick-release bracket

# HT 1000, JT 1000, MTX 8000 & MTX 9000

Compatible with MT2000 AND MTS2000

## Carrying Accessories

### CARRYING CASE ACCESSORIES

#### T-STRAP

- NTN7782A T-Strap for Leather Carrying Cases
- NTN7376A T-Strap for Nylon carrying cases

#### BELT LOOPS

- NTN8039B 2.5" High Activity Swivel Belt Loop
- NTN8040B 3.0" High Activity Swivel Belt Loop

#### HIGH ACTIVITY BUTTONS

- NTN1534A High Activity "D" Button w/2.5" Belt Loop (NTN8039B)
- NTN1535A High Activity "D" Button w/3" Belt Loop (NTN8040B)
- NTN8063A High Activity "D" Button

#### BELT CLIPS

- 4205638V09 2.5" Contoured Spring Action Belt Clip
- 4205638V07 3.0" Contoured Spring Action Belt Clip



4205638V07

#### BELT

- 4200865599 1.75" Wide Adjustable Black Belt



4200865599

#### CARRYING STRAP

- NTN5243A Shoulder Carry Strap, allows easy carrying of radio in a case when not wearing a belt



NTN5243A



TDN9684A

TDN9687A

#### SWIVELLER

- TDN9684A Swiveller, includes clip button, holster and belt

#### SWIVELLER REPLACEMENT

##### ACCESSORIES

- TDN9690A Clip button, mounts on battery
- TDN9688A Holster, compatible with all buttons
- TDN9687A 2" nylon belt

ORDER TODAY! 1-800-422-4210  
U.S. Federal Government Customers Call 1-800-826-1913



# HT 1000, JT 1000, MTX 8000 & MTX 9000

Compatible with MT2000 AND MTS2000

## Carrying Accessories

### PORTABLE RADIO HANGER

TDN9327A Portable Radio Hanger for door panels up to 2.75"

TDN9373A Portable Radio Hanger for door panels up to 3.25"

The portable radio hanger slides over and hangs from the door panel in a vehicle. The radio's belt clip slides onto the portable hanger allowing convenient, easy mounting. Two sizes are available to fit door panels.



TDN9327A TDN9373A



HLN6602A

### CHEST PACK

HLN6602A Universal Chest Pack with Radio Holder, Pen Holder, and Velcro Secured Pouch

1505596Z02 Replacement Strap for HLN6602A

Carry the radio mounted on chest with adjustable straps over shoulders and around waist.

### BREAK-A-WAY CHEST PACK

RLN4570A Break-A-Way Chest Pack

All of the same features as the original chest pack (HLN6602A) plus break-a-way tabs that allow the entire pack to be pulled off with approximately 10 lbs. of pressure. Perfect for railroads, manufacturing locations, construction sites and anywhere safety is a concern.



RLN4570A

# HT 1000, JT 1000, MTX 8000 & MTX 9000

Compatible with MT2000 AND MTS2000

## Carrying Accessories & Batteries



RLN4815A

### RadioPAk™

RLN4815A RadioPAk™ Radio/Utility Case

4280384F89 Universal RadioPAk™ Belt Lengthener; fits waists larger than 40"

It's different from all other holders or cases: more comfortable, more useful and more stylish. Worn around the waist, it holds two-way, iDEN portables or cellular phones at hand. Includes a separate 6" x 8" zippered pouch for other on-the-job necessities. Adjustable nylon weave belt; fits both men and women.

### WATERPROOF BAG

HLN9985B Waterproof Bag, includes large carrying strap



HLN9985B

### BATTERIES

#### PREMIUM NICKEL CADMIUM (NiCd)

NTN7143CR 1200 mAh, 7.5V

NTN7150AR 1200 mAh, 7.5V, Intrinsically Safe (MSHA)

NTN7372AR 1200 mAh, 7.5V, Intrinsically Safe

NTN7147AR 1300 mAh, 7.5V, Intrinsically Safe

NTN7149BR 1300 mAh, 7.5V, Intrinsically Safe (CSA)

NTN7341AR 1400 mAh, 7.5V, Intrinsically Safe

NTN7144CR 1500 mAh, 7.5V

#### impres™ NICKEL CADMIUM (NiCd)

HNN9028AR (impres™) 1500 mAh, 7.5V

HNN9029AR (impres™) 1500 mAh, 7.5V, Intrinsically Safe

#### PREMIUM NICKEL METAL HYDRIDE (NiMH)

WPNN4013A 2000 mAh, 7.5V

WPNN4037A 1900 mAh, 7.5V, Intrinsically Safe

Motorola Original Batteries are ruggedly designed for lasting durability and system tested with Motorola two-way radios to ensure optimum performance. We offer various chemistry and capacity alternatives, allowing the user to select the ideal battery for his or her needs. NiCd is best suited for extreme-temperature operation, and provides the maximum number of charge/discharge cycles. Li-ion batteries offer extended duty cycles – providing more talk time per shift.



NTN7143CR



NTN7372AR



NTN7144CR



WPNN4013AR



HNN9029AR

ORDER TODAY! 1-800-422-4210  
U.S. Federal Government Customers Call 1-800-826-1913



# HT 1000, JT 1000, MTX 8000 & MTX 9000

Compatible with MT2000 AND MTS2000

## Chargers

### CHARGERS

#### SINGLE UNIT COMPACT RAPID RATE CHARGERS

- RPX4747A Compact Rapid Rate Charger, 110V
- RPX4748A Compact Rapid Rate Charger, 230V Euro plug
- RPX4749A Compact Rapid Rate Charger, 230V UK plug

These chargers have the power supply built into the line cord giving the user a smaller base unit for easier storage. It also utilizes an enhanced charging algorithm that will help maximize the life of your batteries. It will rapid rate charge both NiCd and NiMH batteries.

#### MULTIPLE UNIT CHARGER (MUC)

- NTN1177D Six-Pocket, rapid rate, 110V
- NTN1178D Six-Pocket, rapid rate, 220V (supplied with 2-prong cord)
- NTN1179D Six-Pocket, rapid rate, 240V (supplied with 3 flat prong cord)

Multi-unit chargers offer six pockets that can be used to rapid charge 1 to 6 batteries simultaneously. The batteries can be charged with the radios or separately. They will rapid rate charge both NiCd and NiMH batteries.

#### MUC ACCESSORIES

- NLN7967A Wall Mount Kit for Multi Unit Charger



NTN1177D



WPLN4111AR



WPLN4130A

#### impres™ SMART ENERGY SYSTEM

- WPLN4111AR impres™ Smart Energy System Single Unit Charger
- WPLN4108BR impres™ Smart Energy System Multi Unit Charger (six bank)
- WPLN4130AR impres™ Smart Energy System Multi Unit Charger with Displays



The impres smart energy system ensures maximum talk-time and optimized battery cycle life through the use of its advanced charging algorithm and automatic reconditioning features. The smart energy system reconditions impres batteries when they need it, automatically, keeping them in peak condition. It's advanced conditioning features allow batteries to be safely left on the charger for extended periods of time without incurring the damaging heat build-up which can rob batteries of cycle life. In addition, batteries left on the charger are kept fully charged so they are always ready when you need them. Talk time and cycle life are optimized and the need for manual maintenance programs reduced or eliminated. This rapid-rate tri-chemistry charging system will also charge existing legacy batteries and supports multiple radio platforms including Saber, XTS, and HT1000 series portables. impres™ Multi Unit Chargers with display modules provide valuable information about impres™ batteries. Due to its patented communication protocol, an impres™ battery's current mAh and % capacity are displayed "real time" by simply inserting a battery into a pocket. In addition, battery serial number, kit number, chemistry, charging status, voltage, and other valuable information are displayed. And, by pressing a toggle button, the display can be inverted for wall mounting.

# HT 1000, JT 1000, MTX 8000 & MTX 9000

Compatible with MT2000 AND MTS2000

## Chargers

### *impres™ BUNDLE PACKS*

- RLN5265A* impres™ single unit charger with 2 HNN9029AR Batteries
- RLN5266A* impres™ single unit charger with 2 HNN9028AR Batteries
- RLN5439B* impres™ multi unit charger with 6 HNN9029AR Batteries
- RLN5440B* impres™ single unit charger with 6 HNN9028AR Batteries

Provide significant savings on the impres products by bundling a charger and batteries together as a smart energy system package.

### *impres™ INDIVIDUAL CHARGER DISPLAY MODULE*

- RLN5382A* Charger Display Module for impres™ Multi-Unit Charger Version 1.3 or Later

These modules are designed to be retrofittable with the standard impres Multi-Unit Charger WPLN4108BR. Up to six modules can be purchased per charger, one for each charging pocket. Includes detailed installation instructions. Note: The version number is referenced on the label located on the bottom of the impres Multi-Unit charger. If no version is shown, it is version 1.2 or earlier. For example, version 1.3 will appear as V1.30.

- RLN5591A* Charger Display Module for impres Multi-Unit Charger Version 1.2 or earlier

Compatible with Multi-Unit Charger version 1.2 or earlier. These modules require a software flash update from the Radio Support Center. Display modules added at the Radio Support Center. Details included with each shipment. Note: The version number is referenced on the label located on the bottom of the impres™ Multi-Unit charger. If no version is shown, it is version 1.2 or earlier. For example, version 1.2 will appear as V1.20.

### *impres™ CD*

- 0180305J70* impres CD

This CD provides an interactive guide to the impres™ Charging System, and provides benefit statements as well as application examples.



RLN5382A

# HT 1000, JT 1000, MTX 8000 & MTX 9000

Compatible with MT2000 AND MTS2000

## Chargers



WPPN4002BR  
Shown With  
Optional Cigarette  
Lighter Adapter

### **MOTOROLA CONDITIONING CHARGER (MCC)**

- WPLN4090BR** MCC Kit, 110V AC; includes both base charger unit and 7V adapter plate
- WPLN4091BR** MCC Kit, 220V AC; includes both base charger unit and 7V adapter plate
- WPPN4002BR** 110V AC Base Charge Unit Only (order adapter plate separately)
- WPPN4006AR** 220V AC Base Charge Unit Only (order adapter plate separately)
- WPPN4065BR** Multi-Unit Conditioning Charger Four Station Base 110V (order adapter plate separately)
- WPPN4004BR** 7 Volt Adapter Plate Only
- 3080384G15** 15 Cigarette Lighter Adapter Cord; MCC multi-unit conditioning charger
- RLN4814A** Vehicular Mounting Bracket and Hard Wire Cable for single unit Motorola Conditioning Charger
- 3080384M21** DC Hard Wire Cable, for vehicular installation (included in RLN4814A)

The MCC utilize negative pulse charging technology that will help extend battery life and enhance battery operation. It will safely condition and charge your specified NiCd and NiMH batteries in approximately one to two hours. The MCC controls heat buildup due to its charging and termination algorithms and the maintenance mode allows batteries to be safely left on the charger for extended periods of time. And now there is an Instant Fault Detection (IFD) feature which detects faulty radio batteries in seconds, which notifies the user that the battery will not operate at peak performance. Optional accessories are available allowing these chargers to be used in both AC and DC environments providing optimal charging flexibility.

# HT 1000, JT 1000, MTX 8000 & MTX 9000

Compatible with MT2000 AND MTS2000

## Chargers

### BATTERY MAINTENANCE SYSTEM<sup>PLUS</sup> (BMS<sup>PLUS</sup>)

WPLN4079BR Six-Station, 110V AC, 50/60 Hz

WPLN4080BR Six-Station, 230V AC, 50/60 Hz

WPPN4085AR BMSPlus field Upgrade Kit for WPLN4079AR, WPLN4080AR and WPLN4081AR; allows these units to support Li-ion battery chemistries

NDN4005B Three-Station, 110V AC 50/60 Hz  
(does not support Li-ion or 3-cell batteries)

NDN4006B Three-Station, 230V AC 50/60 Hz  
(does not support Li-ion or 3-cell batteries)

Using interchangeable battery adapters (sold separately), the BMS<sup>Plus</sup> is capable of charging and discharging, analyzing, conditioning and cycle testing batteries. It supports NiCd, NiMH and Li-ion battery chemistries (Li-ion on 6 station model only) and tracks battery voltage and capacity (mAh). The BMS Plus offers a 3-year warranty. Its easy-to-use design supports hundreds of 2-way, cellular, and camcorder batteries. Includes serial printer\* port (RS-232).

The BMS<sup>Plus</sup> offers a 3-year warranty. Its easy-to-use design supports hundreds of 2-way, cellular, and camcorder batteries with printer port\* (Serial-RS-232C port—uses female 9-pin to male 25-pin cable).

*\*Compatible with the STAR Micronics SP200 series printers (and other printers with STAR emulation) available from any STAR Micronics distributor.*



WPLN4079BR



TDN9435C

### BMS<sup>PLUS</sup> ADAPTER

TDN9435C Adapter Compatible with NiCd batteries only

CDN6364A Adapter Compatible with both NiCd and NiMH batteries

# HT 1000, JT 1000, MTX 8000 & MTX 9000

Compatible with MT2000 AND MTS2000

## Chargers

### **BATTERY OPTIMIZING SYSTEM II (BOS II)**

WPLN4124AR BOS II, Four-Station, 110-240VAC (US line cord)

WPLN4125AR BOS II, Four-Station, 110-240VAC (UK/Euro line cords)

No other battery analyzer matches the speed, accuracy, versatility of the Battery Optimizing System II. Ideal for large fleet, public safety, and all other users who rely on their battery performance. Now with increased power, more sophisticated programming options, and easier to use navigation paths, optimizing your batteries was never easier. Key features include:

- Support for NiCd, NiMH, Li-ion and SLA batteries
- 100 watt power supply programmable from 100 mA to 4 Amps per station
- Interchangeable adapters accommodate all major batteries
- Includes a variety of user programs and allows for customizable programming
- Proprietary recondition cycle restores NiCd, & NiMH batteries
- Increased processing power and testing resolution-including a three minute Quicktest that measures the batteries State of Health (SoH)
- Printer output for reports and labels
- Three year warranty



WPLN4124AR

### **BOS ADAPTER**

RL-72403 Standard Adapter



# HT 1000, JT 1000, MTX 8000 & MTX 9000

Compatible with MT2000 AND MTS2000

## Chargers



TDN9816A

### VEHICULAR CHARGER

TDN9816A Vehicular Charger

This 12V DC charger is ideal for mobile customers; it charges portable radio NiCd batteries in rapid charge mode (in less than 3 hours) until full charge is obtained and then switches to trickle charge mode. A microprocessor controls the charge rate. This durable unit comes with a metal mounting bracket and is PAC\_RT compatible

### VEHICULAR TRAVEL CHARGER

RLN4884B Vehicular Travel Charger

A great traveling companion that ensures constant communication while on the road; allows the battery to rapid charge while using the radio. Users can receive communication immediately once the charger is connected, and transmit from a previously "dead" battery in just 5 minutes. This light and compact unit includes a voltage regulated lighter adapter, custom charger base, mounting bracket, and coil cord; ideal for public safety, utility and construction markets.



RLN4884B

### TRAVEL CHARGER AC TRANSFORMER

2580600E05 Transformer 120V (US)

2580600E06 Transformer 230V (Euro)

2580600E07 Transformer 230V (U.K.)

2580600E08 Transformer 230V (Argentina)

Travel Charger AC transformer connects to the cigarette lighter adapter cord to allow it to be plugged into an AC wall outlet for indoor use.

### TRAVEL CHARGER MOUNTING BRACKET

0780384K84 Universal Mounting Bracket for travel charger; includes screws and nylon cord

ORDER TODAY! 1-800-422-4210  
U.S. Federal Government Customers Call 1-800-826-1913



# HT 1000, JT 1000, MTX 8000 & MTX 9000

Compatible with MT2000 AND MTS2000

## Antennas

### ANTENNAS

Injection molded for rugged environments. Each antenna is tested and tuned to give maximum power and performance.

#### FLEXIBLE WHIP ANTENNAS

8505241U05 Flexible Whip, 403-520 MHz, 6"

8505241U03 Flexible Whip, 806-869 MHz, 7"

8505241U04 Flexible Whip, 896-941 MHz, 7"

Antenna has a one-piece finish and steel core for optimal strength and better radiation characteristics.

#### HELICAL ANTENNAS

8505644V01 Helical, 136-151 MHz, 6"

8505644V02 Helical, 151-162 MHz, 6"

8505644V03 Helical, 162-174 MHz, 6"

8505644V04 Helical, 403-435 MHz, 3"

8505644V05 Helical, 435-470 MHz, 3"

8505644V06 Helical, 470-520 MHz, 3"

Helical antennas are sturdy and dependable for years of failsafe communication. Each antenna is designed and built to quality standards. The skirt at the base of the connector helps to seal out damaging elements. Connector is made of plated brass material for long life.

#### DIPOLE ANTENNAS

NAF4000B Dipole, 806-869 MHz, 8"

8505884R02 Dipole, 896-941 MHz, 8"

Dipole molded antennas are injection molded in lasting polyurethane. The wide skirt at the bottom of the connector protects against damaging environmental elements. The dipole antenna is ideal when strong and solid signal clarity is demanded.

#### WIDEBAND ANTENNA

8505518V01 Wideband, 136-174 MHz, 6"

Wideband antenna is ideal when radio is used in different frequencies since one antenna will cover all ranges.



8505644V01

8505644V03

8505644V04



NAF4000B

8505884R02

8505241U05

# HT 1000, JT 1000, MTX 8000 & MTX 9000

Compatible with MT2000 AND MTS2000

## Antennas

### **STUBBY ANTENNA**

8505241U06 Stubby, 806-941 MHz, 4"

RAD4194A Stubby, 150-162 MHz

This quarterwave stubby antenna is ideal when radio is worn on the belt because the short antenna is non-obtrusive. This is a broad band antenna that can be used for both 800MHz and 900MHz applications.



8505241U06

### **MISCELLANEOUS ACCESSORIES**

#### **PUBLIC SAFETY TILT SWITCH**

NTN7660B\* Public Safety Tilt Switch

An external emergency switch that is activated when the unit is tilted at a greater than 60 degree angle. Delay times are factory programmed for 8 seconds and are not field programmable. The emergency feature must be programmed into the radio to enable the tilt switch option. Not compatible with the JT1000.

#### **OPTION BOARDS**

NTN8313A Analog Voice Scrambler Advantage Board, for use with HT1000 only—NOT APPROVED for installation in FM approved models

*\*Intrinsically safe*

Radio Products and Services Division  
1313 E. Algonquin Rd.  
Schaumburg, IL 60196  
Phone: 1-800-422-4210  
TTY: 1-800-522-5210  
Fax: 1-800-622-6210  
U.S. Federal Government customers:  
Phone: 1-800-826-1913  
Motorola On-line Users: [www.motorola.com/businessonline](http://www.motorola.com/businessonline)



Motorola and the Stylized M logo are registered in the U.S. Patent and Trademark Office.  
All other product or service names are the property of their respective owners.  
© Motorola, Inc. 2003